

Why participate?

Contest information

Entry form

Teacher's notes

Oneida County
Aquatic Invasive Species (AIS)
Photo & Poster Contest
2012

Theme: *AIS & You*



**STOP AQUATIC
HITCHHIKERS!**

Prevent the transport of nuisance species.
Clean all recreational equipment.
www.ProtectYourWaters.net

Why Participate?

Welcome Administrators, Teachers, Parents, and Students

The Oneida County Land & Water Department and UW-Extension would like to invite you to participate in the 1st Annual *Oneida County Aquatic Invasive Species (AIS) Photo and Poster Contest*. Oneida County students in second through twelfth grade are eligible to participate. The primary goal of this contest is to educate students about aquatic invasive species (AIS).

FACT: Squash Lake spends \$15,000 for scuba divers to hand harvest Eurasian water-milfoil each summer.

FACT: A thirty percent loss of species diversity was seen in a Canadian Boreal Shield Lake when AIS moved in.

FACT: AIS affects fishing, boating, hunting, bird watching, beaches, and many other things we love.

We hope that students participating in a contest such as this, will gain a better understanding of how AIS can affect each individual in Oneida County. More importantly, that each of us *can help* stop the spread of invasive species and protect our lakes and rivers!

Medals will be awarded for 1st, 2nd, and 3rd places, and honorable mention certificates will also be presented. In addition, each 1st place winner's *class and school* will become winners too! Moreover, winning entries will become part of a traveling art exhibit that will be seen throughout Oneida County in the summer of 2012.

We hope you will join us in the fight against AIS!

Contest Information

Eligibility:

Contest is open to Oneida County students in public, private, charter, and home schools.

Divisions:

Poster

Elementary, grades 2-3

Middle, grades 4-6

Junior, grades 7-9

Senior, grades 10-12

Photography

Senior, grades 9-12

Junior, any other grade

Deadline:

All entries **must be** received by **4:00 PM, May 4, 2012**. Entries can be dropped off at the UW-Extension Office (lower level of Rhinelander Airport) , 3375 Airport Road, Rhinelander, WI *or* at the Oneida County Land & Water Department, 2nd floor (annex), Oneida County Courthouse, One Courthouse Square, Rhinelander, WI. Please call 715-365-2750 for more information, or email msadauskas@co.oneida.wi.us.

Judging:

A panel of judges with backgrounds in the arts and sciences, and the public sector will determine the winners. Judging will take place May 7-8. Judge's decisions are final. Winners will be notified during the week of May 7-11.

Contest Information

Prizes:

- ◆ Each Division will be awarded a 1st, 2nd, and 3rd place prize medal.
- ◆ Honorable Mention Certificates will be awarded as deemed appropriate by the panel of judges.
- ◆ Winners will be recognized after school on Monday, May 21. More details to follow.
- ◆ Each 1st place winner's *class* wins too! During the weeks of May 21-25 and May 28-June 1 the Oneida County AIS Coordinator will present an extra award to the *class* of the 1st place winner (subject to teacher approval and coordination). Also, each 1st place winner's *school* will receive a lake ecology book for their library. Get your friends to enter and you could *all* be winners!

Rules:

- ◆ All artwork must be the **original work** of the individual student.
- ◆ Entries must have the *entry form* attached firmly on the back of artwork.
- ◆ Individual students may enter in either *or* both photography or poster divisions.

Photography

- ◆ Photos should be no larger than 8 x 10 inches, and must be mounted on material no larger than 11 x 17 inches. **NO FRAMES.**
- ◆ Photos can be black & white or color.
- ◆ Photos must have a message/title.

Posters

- ◆ Posters should be no larger than 11 x 17 inches.
- ◆ Poster can be on any color paper, but paper must be un-lined.
- ◆ Photos cannot be used on poster.
- ◆ Any coloring materials may be used.
- ◆ No stamps or stickers may be used.

Contest Information

Helpful Student Hints:

Judging Criteria

- | | |
|---|-----|
| ◆ Effectiveness of message | 40% |
| ◆ Shows understanding of topic | 20% |
| ◆ Sticks to the theme and follows contest rules | 20% |
| ◆ Universal appeal | 10% |
| ◆ Originality | 10% |

Copyrights

Be aware of copyrights. Copyrights are a protection by U.S. law for creators of original work. Remember to use your own ideas, drawings, and photographs. Also, if you see this symbol (©) on any piece of work, you **cannot** use it in your work.

Remember to:

- ◆ Use the entry form provided, fill it out completely, have your parent/guardian sign and attach it to the back of your entry.
- ◆ Choose a brief, catchy message for your poster.
- ◆ Use colors to get and hold attention.
- ◆ Make sure photos are not blurry.
- ◆ Don't use photos in the poster division.
- ◆ Put a message or title on your photograph (see example in teacher's notes).
- ◆ Don't try to include too many ideas or activities in your artwork.

Entry Form

Oneida County AIS Photo & Poster Contest Official Entry Form

(Fill out **completely**, carefully **print**, form must be **attached firmly to back** of artwork)

Please circle one:

poster entry

photo entry

Teacher name

School phone #

School address

School/teacher email

Artist/Photographer's name

Age

Grade

Home phone #

School

The following statement MUST be read and signed by the artist AND their parent/guardian.

I have read and agree to the rules of the ONEIDA COUNTY AIS PHOTO & POSTER CONTEST. All decisions of the judges are final. I assign all rights and ownership of my poster to the organizers and agree that it may be used, published, displayed, or donated. I certify that this poster or photo is my original created art work as witnessed by my parent or teacher. All non-winning entries may be picked up after May 15, 2012 at the UWEX office.

Artist signature

Date

Parent/guardian signature

Date

Parent/guardian printed name

Teacher's Notes

We are excited to have students participating in the 1st Annual Oneida County AIS Photo and Poster contest! We hope the following resources can be used to help teachers and students become more familiar with AIS. If you have any questions or need materials please contact Michele Sadauskas, Oneida County AIS Coordinator, msadauskas@co.oneida.wi.us, or 715-365-2750.

Examples:

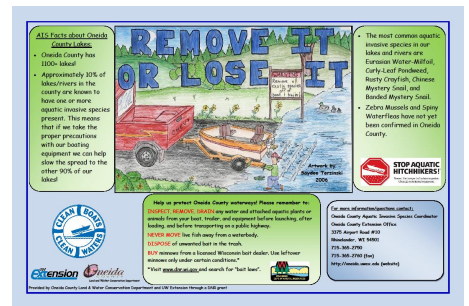
(For inspiration only, artwork is copyrighted.)



Photo entry example.
8 x 10 photo on 11 x 17 paper.



Christian Alford, Honorable Mention



Saydee Terzinski, 1st place, poster made into placemat by Oneida County Land & Water/UWEX

UW-Extension provides equal opportunities in employment and programming, including Title IX and ADA requirements. Please advise us 24 hours in advance of program if you have a disability and desire special accommodations to attend. Requests will be kept confidential.

Oneida County Land & Water Department/UW-Extension

1.715.365.2750 • www.oneida.uwex.edu/



Teacher's Notes

Oneida County AIS Statistics:

22 lakes have Eurasian Water-milfoil

12 lakes have Curly-leaf Pondweed

67 lakes have Rusty Crayfish

BUT,

90% of Oneida County lakes don't have AIS!

We are making a difference!

Suggested Links

Rhineland Library presentation: <http://oneida.uwex.edu/2011/12/28/library-presentation/>

Oneida County AIS: <http://oneida.uwex.edu/community-development/aquatic-invasive-species/>

UW Extension Lakes: www.uwsp.edu/cnr/uwexlakes/

Wisconsin DNR: <http://dnr.wi.gov/invasives/>

For a list of AIS publications please visit:

www.uwsp.edu/cnr/uwexlakes/

Click on *Resources/CBCW/Aquatic Invasive Species Publications*